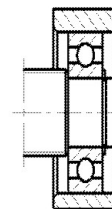
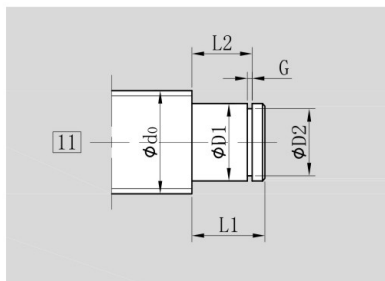
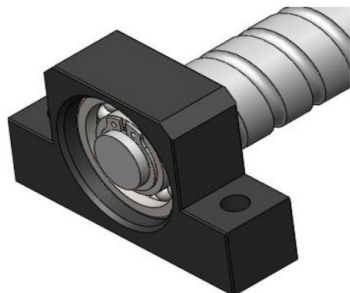


丝杆轴端形状Screw end forms

类型11 Form11

支撑座剖视图Application

端部支撑
Supported end

单位Unit: mm

类型 Form	滚珠丝杠规格		L1	D1	L2 +0.2	D2 h11	G H13	滚珠丝杠规格		支撑座型号				
	Ball screw size							Ball screw size		End support block				
	d ₀	P						d ₀	P	FF型	EF型	BF型	AF型	
11	8	2.5	9	6	-0.005 -0.012	6.8	5.7	0.8	8	2.5	FF06	EF06	-	-
	8	2.5	9	6	-0.005 -0.012	6.8	5.7	0.8	8	2.5	-	EF08	-	-
	12	4/5/10	10	8	-0.005 -0.012	7.9	7.6	0.9	12	4/5/10	FF10	EF10	BF10	AF10
	16	4/5/10/16	11	10	-0.005 -0.012	9.15	9.6	1.15	16	4/5/10/16	FF12	EF12	BF12	AF12
	20	4/5/10/20	13	15	-0.005 -0.014	10.2	14.3	1.15	20	4/5/10/20	FF15	EF15	BF15	AF15
	20	4/5/10/20	16	17	-0.005 -0.014	13.2	16.2	1.15	20	4/5/10/20	FF17	-	BF17	-
	25	4/5/10/25	19	20	-0.005 -0.014	15.4	19	1.35	25	4/5/10/25	FF20	EF20	-	AF20
	32	5/10/20/32	20	25	-0.005 -0.014	16.4	23.9	1.35	32	5/10/20/32	FF25	-	BF25	-
	40	5/10/20/40	21	30	-0.005 -0.015	17.8	28.6	1.75	40	5/10/20/40	FF30	-	BF30	-
	40	5/10/20/40	22	35	-0.005 -0.015	18.8	33	1.75	40	5/10/20/40	-	-	BF35	-
	50	5/10/12/20/40	23	40	-0.005 -0.015	19.8	39	1.95	50	5/10/12/20/40	-	-	BF40	-